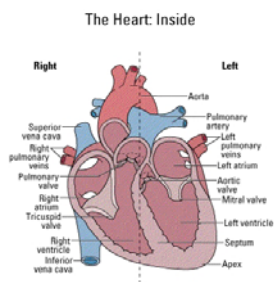


## The Laboratories for Fundamental Research

Invite you to volunteer to participate in an exciting new experiment in 2006-2007 to explore how your nervous system might automatically predict the future. Check it out on-line at [www.lfr.org](http://www.lfr.org)

1-Hour total time commitment. Laboratory Location:  
415 Cambridge Ave. Suite 3, Palo Alto, CA.  
e-mail: [may@LFR.ORG](mailto:may@LFR.ORG)

The Laboratories for Fundamental Research is the current home of the former US Government's 20-year, \$20M program to investigate and use extrasensory perception (ESP) during the Cold War. Now, funded exclusively by private foundation grants, we are continuing that scientific excellence developed during those two decades of effort. Our latest experiment explores how the body can peek slightly into the future.



With medically approved equipment, we monitor your heart rate in beats per minute. The action of our hearts sometimes reflects our emotional state; that is, if you are a little nervous or you are suddenly surprised, your heart rate might increase. Our sensitive equipment can sense slight heart rate changes over time. We see an expected slight decrease in rate even **before** a future sound!

The total time commitment is about an hour, but the experiment itself takes approximately 30 minutes. Initially you will hear a complete description of the experiment and read and approve a consent form. Then, after we have attached electrodes on your sides just below your ribs and given you a pair of earphones, we will monitor your heart rate during the session. From time to time on a random basis you will hear about 24 very loud bursts of 1-second long sounds. At the end, we will show you the results and if you like provide a plot of the data.

This experiment is very important because it is showing us that our nervous system can correctly anticipate (statistically speaking) a startling sound, even before the computer has randomly decided whether to present the sound. This appears to be physiological evidence of precognition—peeking slightly into the future.

If you live in or are visiting the San Francisco Bay, please contact Edwin May at [may@lfr.org](mailto:may@lfr.org) or call to make an appointment (650) 276-0522.

To learn more about our laboratory in general, visit [www.lfr.org](http://www.lfr.org).